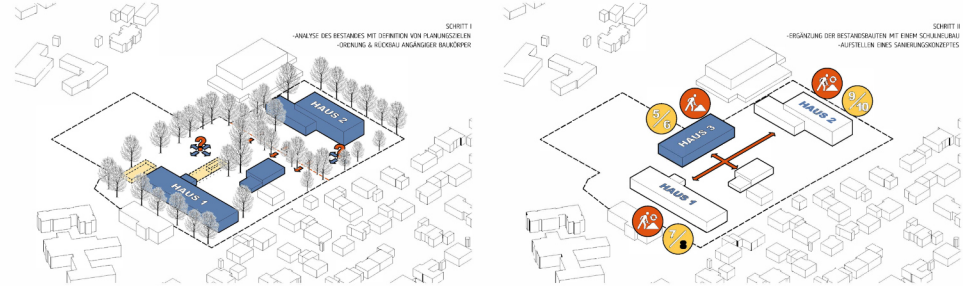
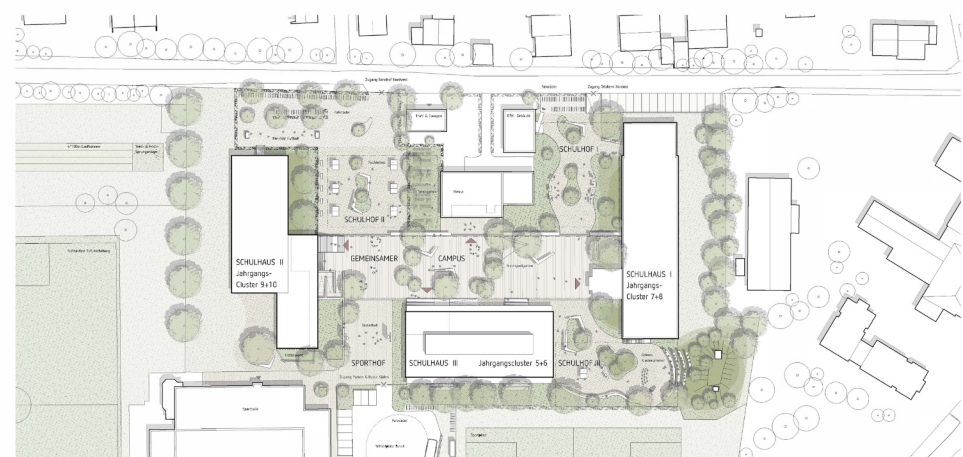


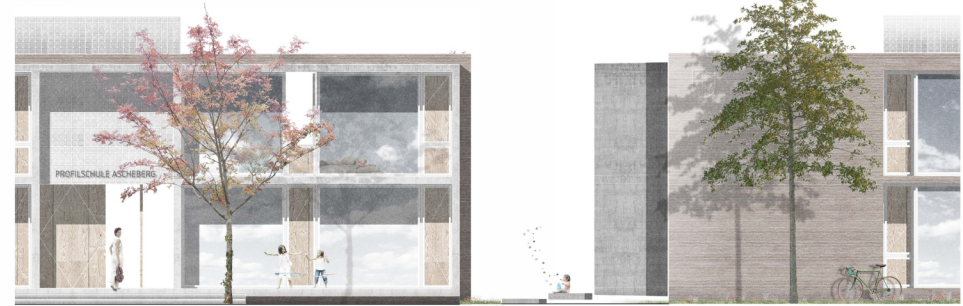
UMSTRUKTURIERUNG UND ERWEITERUNG PROFILSCHULE ASCHBERG



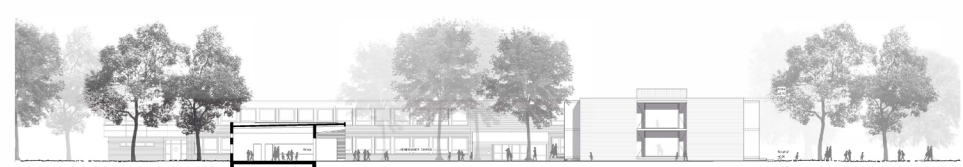
PHOTOGRAPHE KONZEPTIERE



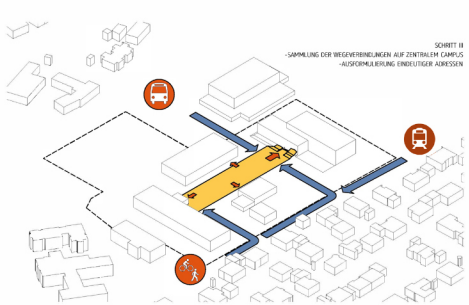
LAGEPLAN M 1_500



DETAILANSICHT CAMPUS / DETAILSCHNITT UNTERRECHT / DETAILSICHT GIEBEL M 1_50



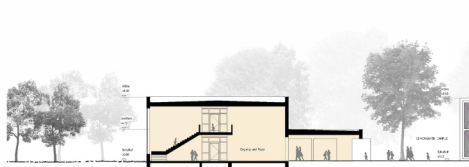
ANSICHT WESTEN M 1_200



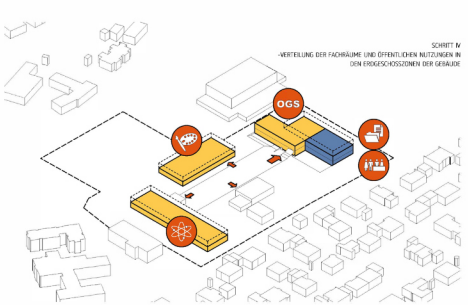
PHOTOGRAPHE KONZEPTIERE



MATERIALCOLLAGE BESTAND & NEUBAU



ANSICHT NORDEN M 1_200



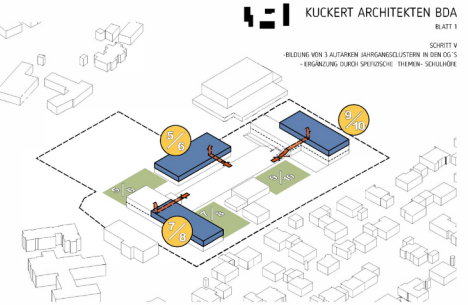
PHOTOGRAPHE KONZEPTIERE



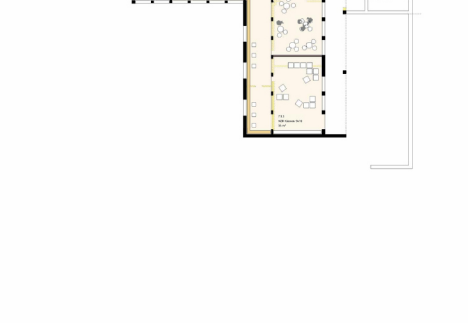
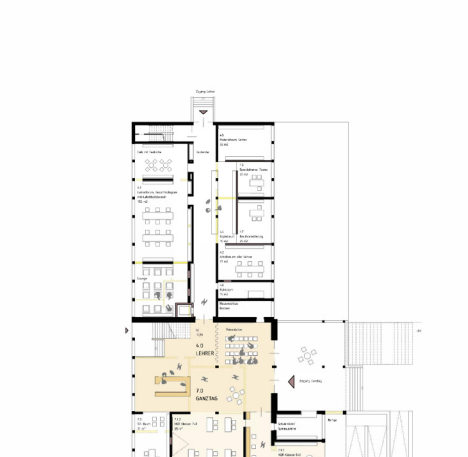
DETAILANSICHT CAMPUS / DETAILSCHNITT UNTERRECHT / DETAILSICHT GIEBEL M 1_50



ANSICHT OSTEN M 1_200



PHOTOGRAPHE KONZEPTIERE

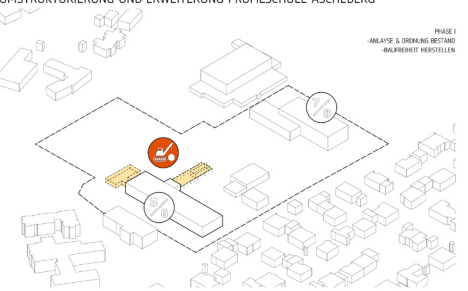


GRUNDRISS SCHULESGESCHOSS M 1_200

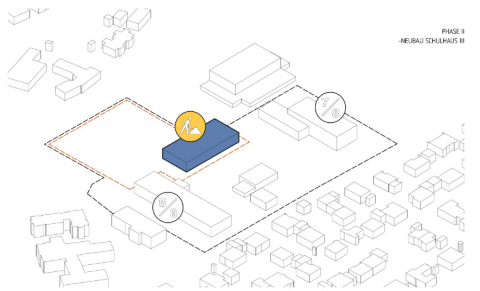


ANSICHT SUDEN M 1_200

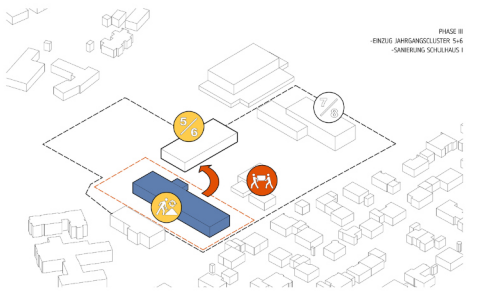
PHASE I
ANALYSE & DEFINITION BESTAND
BAUGRUNDSTÜCKE



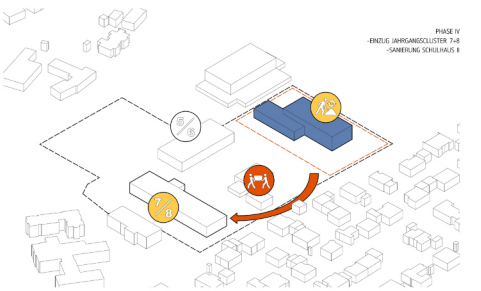
PHASE II
NEUBAU SCHULHAUS II



PHASE III
ENDLICHE JAHRGANGSCLUSTERN 5-6
SAMENUNG SCHULHAUS I



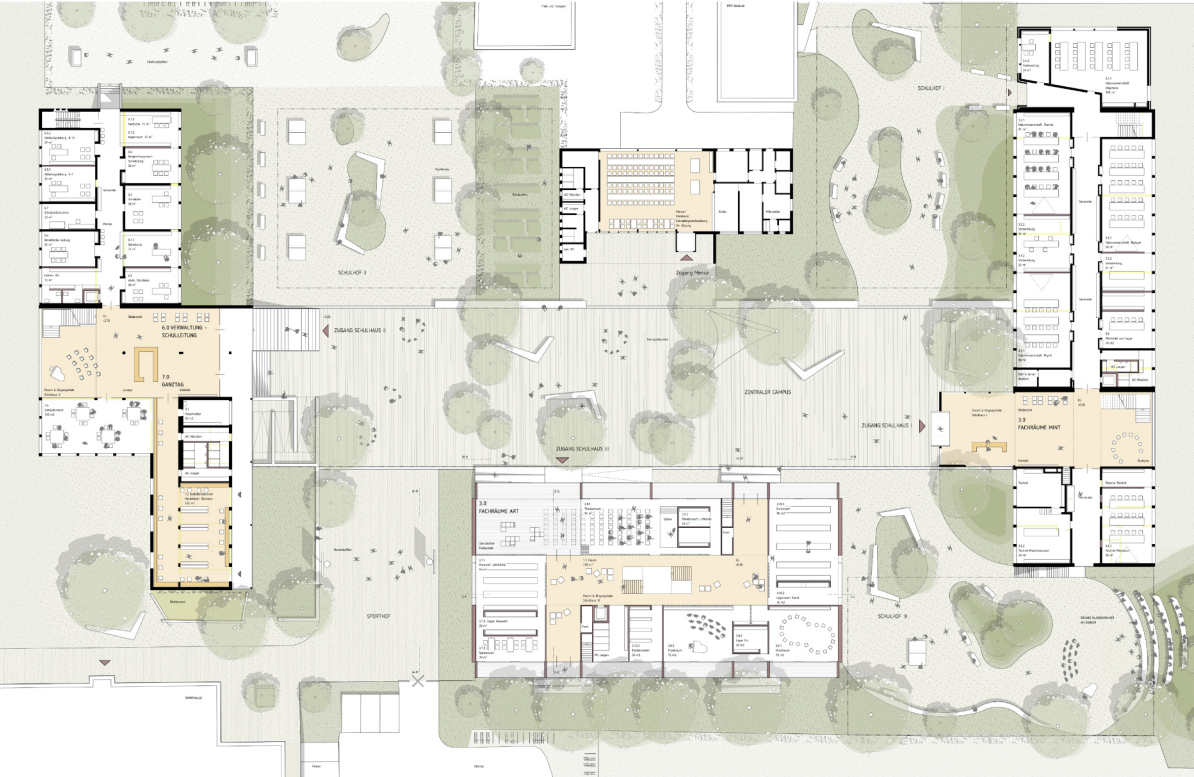
PHASE IV
ENDLICHE JAHRGANGSCLUSTERN 7-8
SAMENUNG SCHULHAUS I



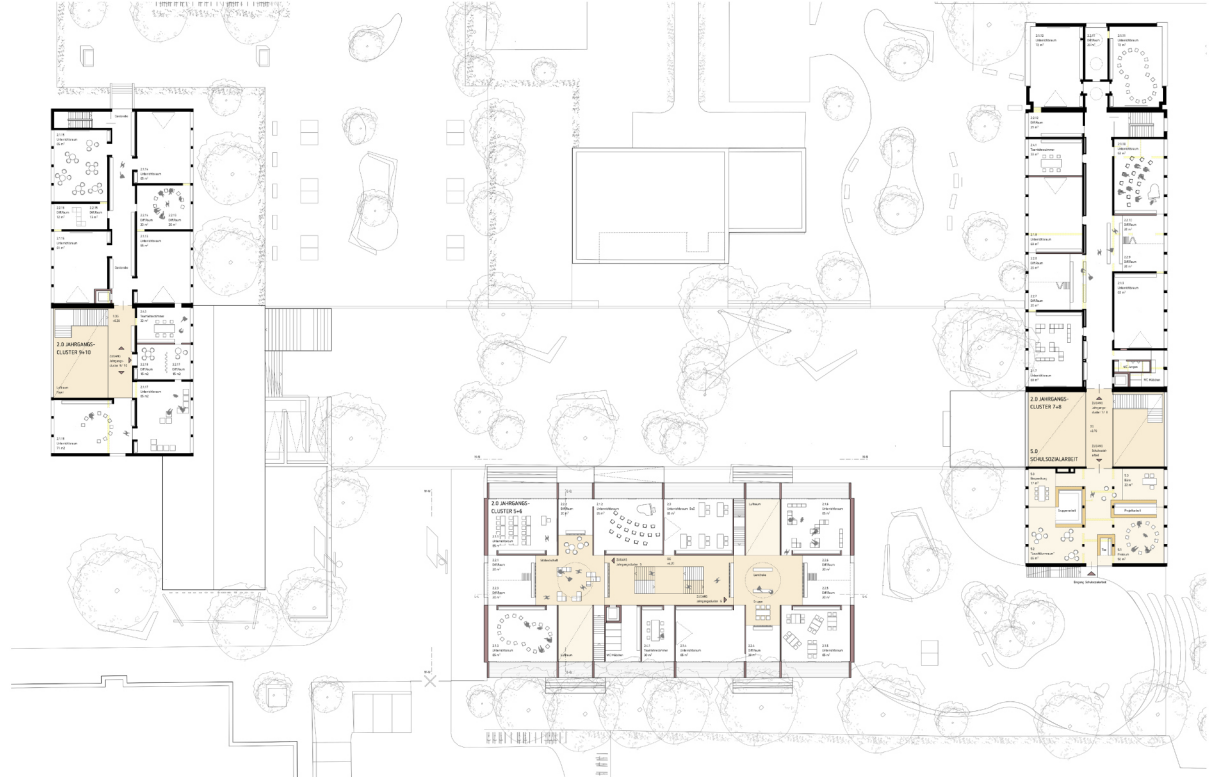
PHASE V
ENDLICHE JAHRGANGSCLUSTERN 9-10
SAMENUNG SCHULHAUS I



PHOTOGRAMME BAUGRUNDSTÜCKE



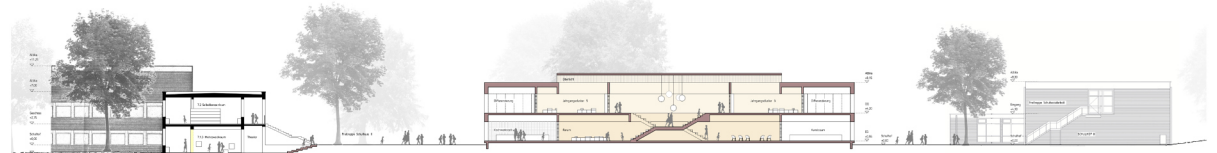
GRUNDRISS OBERGESCHOSS M 1:200



GRUNDRISS OBERGESCHOSS M 1:200



LÄNGSSCHNITT GRUNDGESCHOSS M 1:200



LÄNGSSCHNITT M 1:200